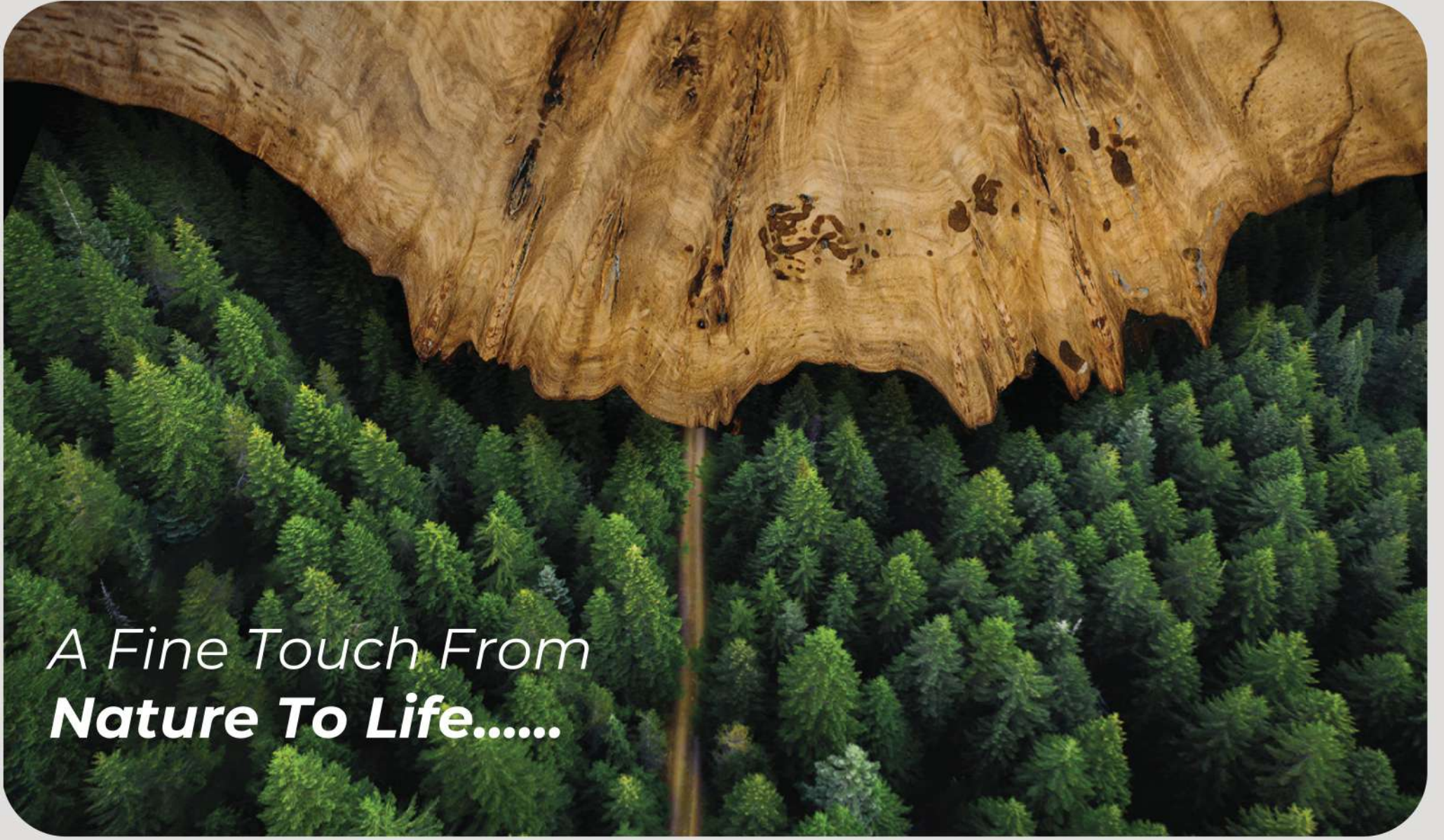




Wood Packaging and Forestry Products



wood packaging and forest products

www.akasyaahsap.com.tr | info@akasyaahsap.com.tr

A saw generates notes. It makes music when it contacts wood. Don't expect success if you don't love that music. Those notes have been music to my ears since childhood.."

Yücel İNCE



CHRONOLOGY

2007

We launched our business with 3 employees in Istanbul Ikitelli as **Başak Wood Packaging**.

2010

We opened our first factory as **Sistem Wood Packaging** in a more spacious workshop with 10 employees.

2014

We commissioned our central factory with 55 employees under the roof of **Akasya Wood Packaging LTD. ŞTİ.** in Avcılar, Istanbul.

2016

We opened our **Manisa, Akhisar** factory. In the same year, we established **Vizyon Case LTD. ŞTİ.** and diversified our business to include the production of plastic component bags.

2017

We laid the foundation our **Plywood Factory** in Tokat, Turhal.

2018

We opened our 3.400 m2 indoor and 8.100 m2 outdoor **Plywood Factory** and employed more than 150 employees.

2019

We opened our **factory in İstanbul, Sultanbeyli**.

2020

We laid the foundation of our **Timber Factory** in Tokat, Turhal.

2021

We opened our **factory in Kazan, Ankara**. In the same year, we opened our **Lumber Factory** covering a closed area of 2,600 m2 and an open area of 5,900 m2, and our employees exceeded 200. In the same year, we laid the foundation of the second manufacturing plant of our **Plywood Factory**.

2022

We opened the second manufacturing plant of our **Plywood Factory** and laid the foundation of our **Pellet Factory** in Turhal, Tokat. At the end of the year, we opened our **Çınar Pellet Factory**, covering an open area of 8,200 m2 and a closed area of 2,800 m2 and reached a workforce of over 300 employees.

2023+

We broke new ground in the wood sector by equipping our factories in Turhal, Tokat with Solar Panels with a capacity of 1 MGW and generating our own electricity. In the same year, we laid the foundation of our **Plywood-Lumber Manufacturing Plant** in Ilgaz, Çankırı.

WHO ARE WE?

Our story as the pioneer of the Wood Packaging Sector in Türkiye started in the 2nd Quarter of 2023 with the love for the trees that nature has blessed us with. This love dates back to the childhood of the young entrepreneur Yücel İnce. His passion for wood turned into love when this passion combined with his father's profession, lumbering. This love transformed Akasya Ahşap into a big family with over 300 employees.

The company started its business life as Başak Wood Packaging with a team of 3 people in a small workshop in Istanbul İkitelli in 2007 to continue its knowhow in the timber and plywood field in the wooden packaging sector.

The need for a larger manufacturing facility made its way to the fore to utilize the opportunities in the sector. In 2010, Sistem Ambalaj developed special products for the sector to counter this need with its new image and reinforced structure and started to manufacture foldable wooden packaging products by combining metal and wood called Y-Pack and subsequently patented.

The increasing demands of the sector steered us to our next target and at the end of 2014, we commissioned our central factory Akasya Wood Packaging LTD. in Istanbul Avcılar, which consists of a 7.000 m2 indoor and 5.000 m2 outdoor area.

At the beginning of 2016, we opened our Manisa Akhisar factory by expanding within the framework of our growth targets. In the same year, we established Vizyon Case LTD. in Istanbul Avcılar, which manufactures plastic component bags. These bags, specially manufactured for Turkish Airlines were patented and added to our product range.

We laid the foundation of our plywood factory in Turhal, Tokat to counter the need to supply raw material and the rapid delivery of products to our customers and fulfill our biggest dream which was to produce our raw materials and generate more employment in our country.

In 2018, we commissioned our Plywood Factory built on a 3,400 m² indoor and 8,100 m² outdoor area and started to produce our raw material, plywood. Thus, we broke new ground in the sector to become the only company producing its raw material and became the leading company in the sector with over 150 employees. Our next goal is to produce our own lumber. We started the installation works of our lumber factory.

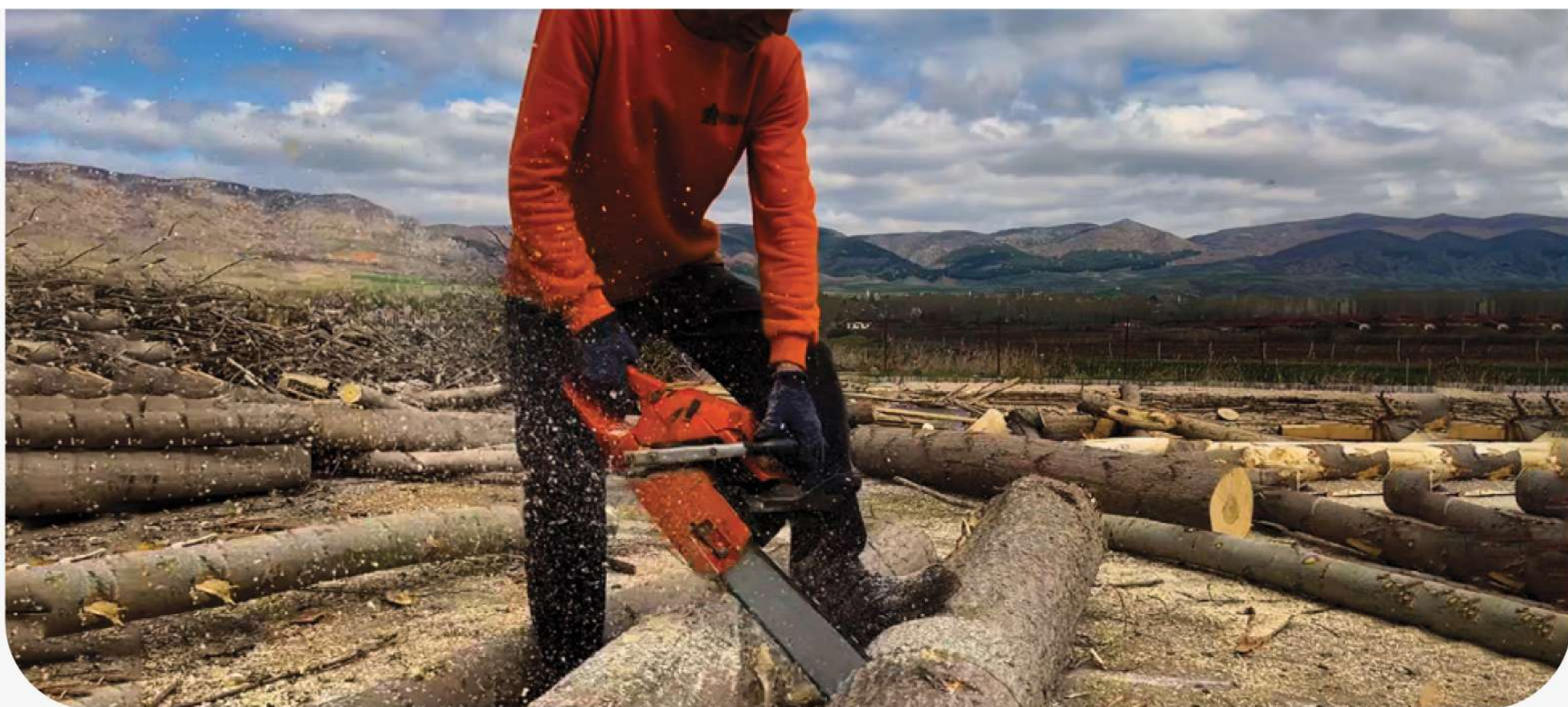
In 2019, we opened our Istanbul Sultanbeyli factory and started to fulfill the product needs of the region from the Anatolian side of the Istanbul to Central Anatolia.

In 2021, we continued to expand across the country in line with our growth targets and commissioned our factory in Kazan Ankara. In the same year, we opened our Lumber Factory, covering an indoor area of 2,600 m² and an outdoor area of 5,900 m², and employed 200+ employees. In the same year, we laid the foundation of the second manufacturing facility of our Plywood Factory and commissioned it in 2022.

In 2022, we laid the foundation of our pellet factory in Turhal, Tokat. In the same year, we commissioned our Çınar Pellet Factory covering an indoor area of 2,800 m² and an outdoor area of 8,200 m². We became an extended family by reaching a total number of over 300 employees.

In 2023, we broke new ground in the sector by equipping our factories in Turhal, Tokat with solar panels, an environmentally friendly energy source with a capacity of 1 MGW to become a factory that generates its own electricity. In the same year, we laid the foundation stone of our Plywood-Lumber Factory in Ilgaz, Çankırı.

As the Akasya family, we are proud and happy to be a groundbreaker in our sector for our country ...



a fine touch from nature to life...



Y-PACK CRATE	6 - 7
Y-PACK & Y-PACK CRATE WITH SEPARATORS	8 - 9
WOOD-REINFORCED PLYWOOD CRATE	10 - 11
CUSTOM DESIGNED WOOD REINFORCED PLYWOOD CRATE	12 - 15
WOODEN CRATE & MACHINE CRATE	16
BEDDED ROLLER-SHAFT CRATE	17
WOODEN CAGE	18 - 19
FOLDABLE CRATE	20 - 21
PALLET.....	22 - 23
CUSTOM DESIGNED PLYWOOD CASE	24 - 25
CUSTOM DESIGNED CANVAS CASE	26 - 27
CUSTOM DESIGNED HONEYCOMB CASE	28 - 29
COMPOSITE CASE	30
WINE RACK	31
VİZYON CASE	32 - 35
STAINLESS STEEL CRATE	36 - 37
ACCESSORIES	38 - 39
OUR FACTORIES	40
OUR CERTIFICATES	41

Y-PACK CRATE

AKS-100



This is a foldable product with sheet metal edges. It is light weight and easy to carry and handle with it's foldable feature. Y-pack is frequently used by different sectors for storage, transportation and packaging purposes.



AKS-100



Y-PACK & Y-PACK CRATE WITH SEPARATORS

AKS-110



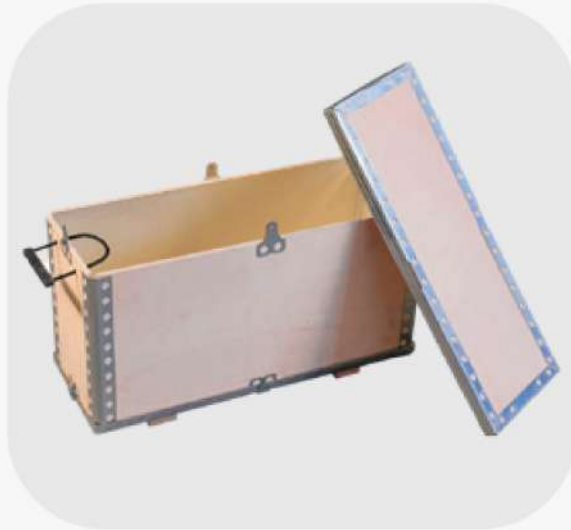
Crates with separators are specially manufactured wooden packaging products with separated compartments. These compartments can be manufactured in different sizes to accommodate the purpose of use and the product to be stored.



AKS-100

Technical Specifications

Model	: Y-Pack & Y-Pack Crate With Separators
Material	: Plywood, Galvanized Steel
Carrying Capacity	: Desired Carrying Capacity
Humidity Rate	: %12 - %16
Material Thickness	: 4 mm - 20 mm
Transport	: Forklift, Crane, Pallet Truck
Export	: ISPM-15
Accessories	: Foam, Handle, Wheel
Product	: AKS-100, AKS-110
Pallet	: EuroPallet, Special Pallet



WOOD-REINFORCED PLYWOOD CRATE

AKS-120



Wood-reinforced plywood crates can be manufactured in the desired dimensions. Since this crate is lighter than other wooden crates, it provides a freight advantage in air, sea and road transportation. They are easy to transport and use in the work area. All the materials used have been processed and marked in accordance with ISPM-15 standards.

AKS-120



Technical Specifications

Model	: Wood-Reinforced Plywood Crate
Material	: Plywood, Lumber
Carrying Capacity	: Desired Carrying Capacity
Humidity Rate	: %16 - %18
Material Thickness	: 4 mm - 26 mm
Transport	: Forklift, Crane, Pallet Truck
Export	: ISPM-15
Accessories	: Hinge, Lock, Piping, Handle
Product	: AKS-120
Pallet	: EuroPallet, Special Pallet



CUSTOM DESIGNED WOOD REINFORCED PLYWOOD CRATE

AKS-130



Padlock

Hinge



Piping

Custom designed plywood crates reinforced with wood can be manufactured with logos and accessories in desired sizes. Since it is lighter than other wooden crates, it provides a freight advantage in air, sea and road transportation. It is easy to transport and use at the work site. All materials used are treated and marked in accordance with ISPM-15 standards.



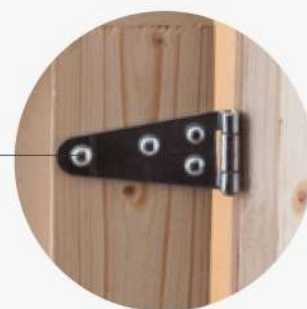
AKS-130



AKS-130



Padlock



Hinge



Wheel



Piping



AKS-130

Technical Specifications

Model	: Wood Reinforced Plywood Crate
Material	: Plywood, Lumber
Carrying Capacity	: Desired Carrying Capacity
Humidity Rate	: %12 - %16
Material Thickness	: 4 mm - 20 mm
Transport	: Forklift, Crane, Pallet Truck
Export	: ISPM-15
Accessories	: Hinge, Lock, Foam, Handle, Piping, Wheel
Product	: AKS-130
Pallet	: EuroPallet, Special Pallet



WOODEN CRATE & MACHINE CRATE

AKS-140



They crates are made of wood produced from trees with the desired properties (pine, spruce, fir, poplar, etc.). Wooden crates, which are marked and made ready in accordance with ISPM-15 standards, have a high carrying capacity and are easy to use.

BEDDED ROLLER-SHAFT CRATE



Technical Specifications	
Model	: Bedded Roller - Shaft Crate
Material	: Lumber
Carrying Capacityi	: Desired Carrying Capacity
Humidity Rate	: %16 - %18
Material Thickness	: 26 mm - 30 mm
Transport	: Forklift, Crane, Pallet Truck
Export	: ISPM-15
Accessories	: Hinge, Lock, Handle
Product	: AKS-140, AKS-150
Pallet	: EuroPallet, Special Pallet



AKS-150



WOODEN CAGE

AKS-160



These weight and volume-oriented crates can be reinforced and dimensioned according to the weight and volume of the material to be carried. The load carrying capacity of this crate is 80% of the load that a closed crate can carry. These crates are mainly used in the shipment of closed and single-piece materials.

AKS-160



Technical Specifications

Model	: Wooden Cage
Material	: Lumber
Carrying Capacity	: Desired Carrying Capacity
Humidity Rate	: %16 - %18
Material Thickness	: 18 mm - 26 mm
Transport	: Forklift, Crane, Pallet Truck
Export	: ISPM-15
Accessories	: Hinge, Lock
Product	: AKS-160
Pallet	: EuroPallet, Special Pallet



FOLDABLE CRATE

AKS-170



The folding feature of this crate saves a great deal of storage space when used. It is produced and marked from wood material in accordance with ISPM-15 standards. The crate is a suitable model for transporting heavy loads.

AKS-170



Technical Specifications

Model	: Foldable Crate
Material	: Lumber
Taşıma Kapasitesi	: Desired Carrying Capacity
Nem Oranı	: %16 - %18
Malzeme Kalınlığı	: 22 mm
Taşıma	: Forklift, Crane, Pallet Truck
İhracat	: ISPM-15
Aksesuar	: Folding Crate Hinge
Ürün Kodu	: AKS-170
Palet	: EuroPallet, Special Pallet



PALLET

AKS-180



Pallets are supporting products manufactured from materials that comply with the standards used in material shipment and product transportation. They can be produced in different sizes according to the size and weight of the product to be transported.



AKS-180

Technical Specifications

Model	: Palet
Material	: Ahşap
Carrying Capacity	: İstenilen Taşıma Kapasitesinde
Humidity Rate	: %16 - %18
Material Thickness	: 18 mm - 30 mm
Transport	: Forklift, Vinç, Transpalet
Export	: ISPM-15
Product	: AKS-180



CUSTOM DESIGNED PLYWOOD CASE

VZ-100



● Carrying Handle

Butterfly Lock ●



● Aluminum Profile

These are wooden cases manufactured by considering the material, apparatus and accessory preferences in the desired dimensions in line with the customer's demand. They can be produced with or without pallets according to demand. The case is reinforced with an aluminum profile. Wooden cases are used for the transportation of fragile products and are suitable for export.

VZ-100



Technical Specifications

Model	: Custom Designed Plywood Case
Material	: Plywood, Aluminum
Carrying Capacity	: Desired Carrying Capacity
Humidity Rate	: %10 - %12
Material Thickness	: 4 mm - 20 mm
Transport	: Forklift, Crane, Pallet Truck
Export	: ISPM-15
Accessories	: Hinge, Lock, Foam, Handle, Piping
Product	: VZ-100
Pallet	: EuroPallet, Special Pallet



CUSTOM DESIGNED CANVAS CASE

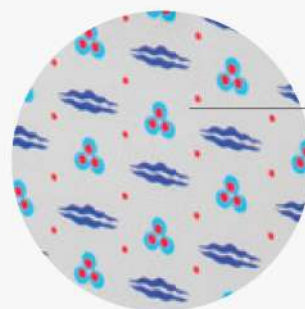
VZ-110



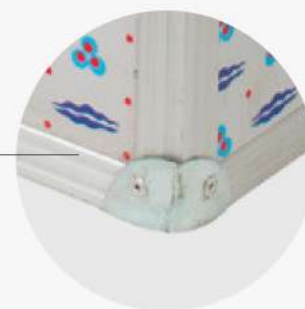
Padlock



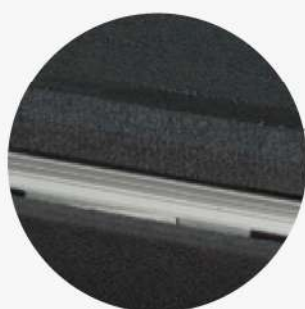
Canvas



Aluminum Profile



Foam



They cases are custom designed plywood covered with patterned canvas. The edges and corners of the product are reinforced with aluminum frames to increase durability and make it more resistant to external factors such as impact and friction.

VZ-110



Technical Specifications

Model	: Custom Designed Canvas Case
Material	: Plywood, Aluminum
Carrying Capacity	: Desired Carrying Capacity
Humidity Rate	: %12 - %16
Material Thickness	: 4 mm - 20 mm
Transport	: Forklift, Crane, Pallet Truck
Export	: ISPM-15
Accessories	: Hinge, Lock, Foam, Handle, Piping
Product	: VZ-110
Pallet	: EuroPallet, Special Pallet



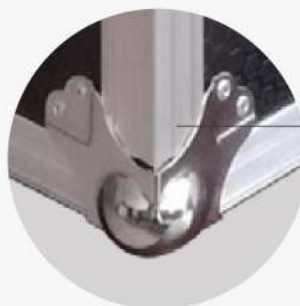
CUSTOM DESIGNED HONEYCOMB CASE

VZ-120



Embedded Handle

Mortise Lock



Chromed Corner

Aluminum Profile



Honeycomb Plywood (high strength wood panels consisting of layers of wood) is used. The case is highly resistant to water and moisture, its strength is increased with reinforced aluminum frames, and it is resistant to factors such as external impact and friction.

VZ-120



Technical Specifications

Model	: Custom Designed Honeycomb Case
Material	: Plywood, Aluminum
Carrying Capacity	: Desired Carrying Capacity
Humidity Rate	: %10 - %12
Material Thickness	: 4 mm - 35 mm
Transport	: Forklift, Crane, Pallet Truck
Export	: ISPM-15
Accessories	: Hinge, Lock, Foam, Handle, Piping
Product	: VZ-120



COMPOSITE CASE

VZ-130

Technical Specifications

Model	: Composite Case
Material	: Composite, Aluminum
Carrying Capacity	: Desired Carrying Capacity
Material Thickness	: 6 mm – 9 mm
Transport	: Forklift, Crane, Pallet Truck
Export	: Appropriate
Accessories	: Hinge, Lock, Foam, Handle, Piping
Product	: VZ-130



The composite case provides safe transportation for your large size important products. The case can be manufactured with different accessories and interior design.

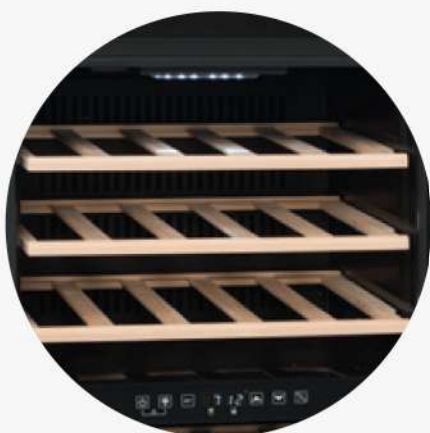
WINE RACK

AKS-200



Technical Specifications

Model	: Wine Rack
Material	: Beech
Humidity Rate	: %12 – %16
Material Thickness	: 12 mm - 35 mm
Dimensions	: 38,5 cm - 48 cm
Product Code	: AKS-200



This shelf ensures that wine is stored properly.

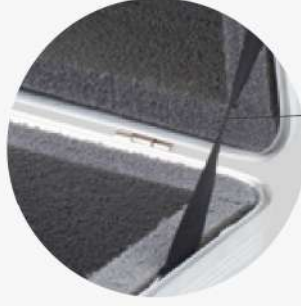
VIZYON CASE

VZ-140K



Carrying Handle

Butterfly Lock



Piping

This case is manufactured according to AS9100 quality requirements and ATA300 packaging standards. It is suitable for reuse. The case is made from recyclable material. Aluminum frames provide quality and strength. Internal dimensions can be changed according to demand by using protective foam.



VZ-140K

Technical Specifications

Model	: Red Vizyon Case
Material	: Plastic, Aluminum Frame
Carrying Capacity	: 0 - 70 kg
Material Thickness	: 3 mm - 9 mm
Transport	: Carrying Handle
Export	: Appropriate
Accessories	: Hinge, Lock, Foam, Handle
Product	: VZ-140K
Dimensions	: 20 x 30 x 20 cm





VZ-140S

Technical Specifications

Model	: Vizyon Case
Material	: Plastic, Aluminum Frame
Carrying Capacity	: 0 - 100 kg
Material Thickness	: 3 mm - 9 mm
Transport	: Carrying Handle
Export	: Appropriate
Accessories	: Hinge, Lock, Foam, Handle
Product	: VZ-140S, VZ-140Y, VZ-140G ,VZ-140GB
Dimensions	: 30x48x28cm 25x28x25cm 27x37x37cm 31x48x37cm 15x48x37cm





VZ-140Y



VZ-140G

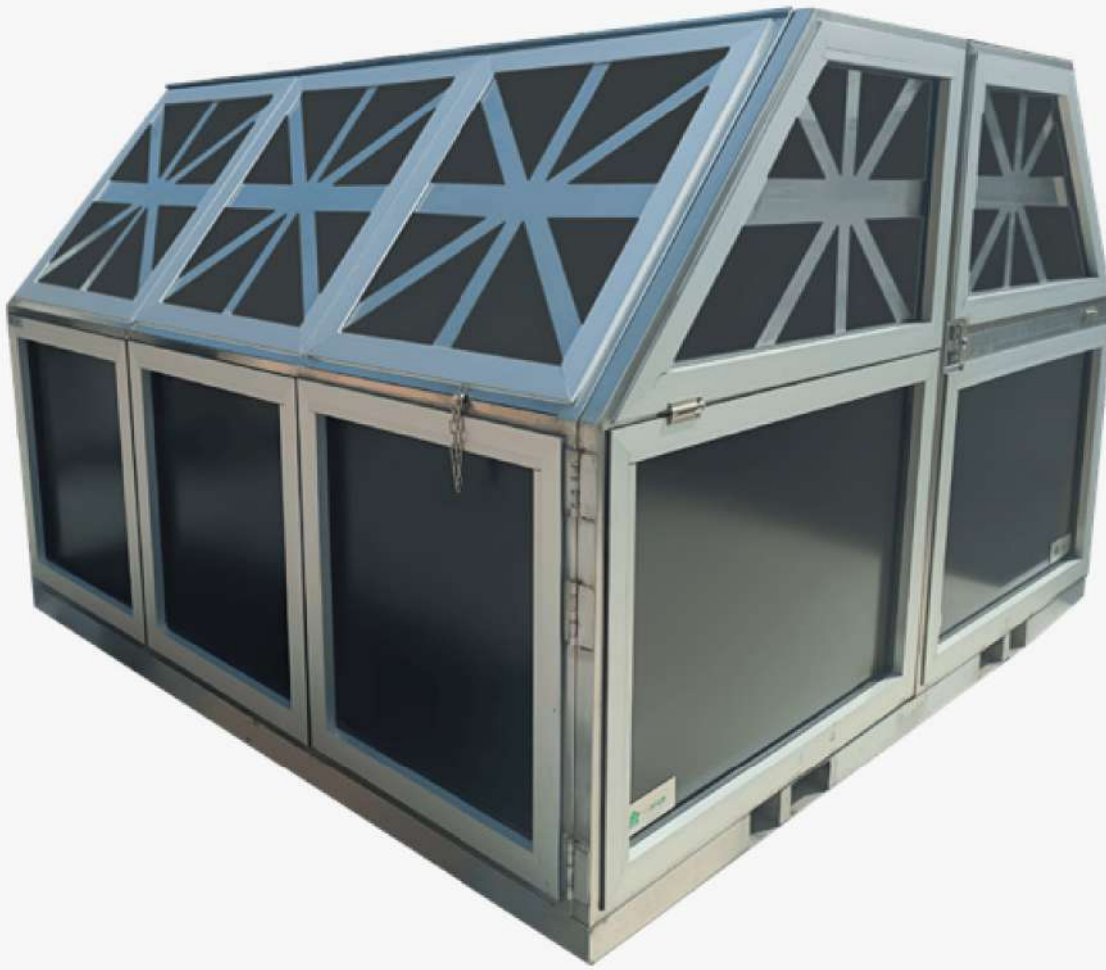


VZ-140GB



STAINLESS STEEL CRATE

VZ-150



This Crate, which is made of stainless steel, has a very robust structure. While the product inside can be seen through its apertures, the product is protected from rain and other impact with its waterproof features. The wheeled carrying pallet makes it is easy to place or remove product from the crate.



VZ-150

Technical Specifications

Model	: Stainless Steel Crate
Material	: Stainless Profile, Aluminum, Plexi, Composite, Honeycomb Plywood, Stainless Steel Sheet
Carrying Capacity	: 1000 kg
Humidity Rate	: %10 - %12
Material Thickness	: 1 mm - 160 mm
Transport	: Forklift, Pallet Truck
Export	: Appropriate
Accessories	: Hinge, Polyurethane Wheel, Stainless Mortise Lock, Stainless Hinge
Product	: VZ-150
Pallet	: Pallet With Custom Wheels



ACCESSORIES

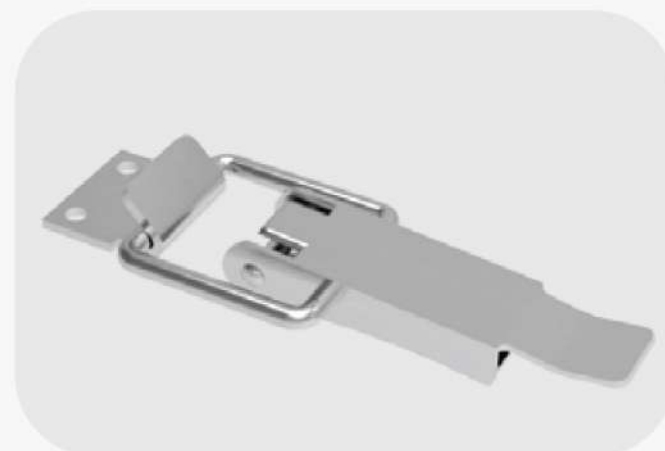


BUTTERFLY LOCK

The custom designed butterfly lock works with a system that is closed by turning and locked by engaging the clamping lever. The locking system is completed by inserting the butterfly-like latch into its slot.

PADLOCK

The padlock is a locking mechanism that is locked by attaching the hook to the apparatus mounted on the crate and closed by tightening the latch.



EMBEDDED LOCK

The mortise lock is mounted by embedding it into the crate's body and lid and provides easy use without protruding. They are chrome plated locks with an aesthetic appearance that open and close by turning the latch mechanism.



CARRYING HANDLE

Carrying handles are devices that are screwed into the body of the crate, enable easy transportation of the crate or operate with a spring system. We produce our carrying handles consisting of chrome-plated metal and plastic.

FOLDING HINGE

Folding hinges, riveted to the folding crate are hinges that allow the body to move and fold thanks to the pin inside.



EMBEDDED CARRYING HANDLE

Embedded carrying handles are chrome-plated with an aesthetic appearance that are mounted by embedding them into the external surface of the crate and enable easy use without protruding.



Avclar Central Factory



İkitelli Factory



Sultanbeyli Factory



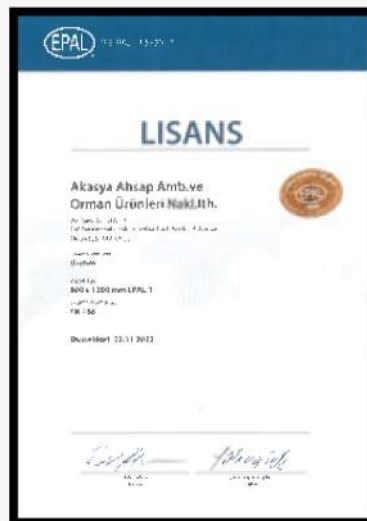
Manisa Factory



Ankara Factory



Tokat Factory





CONTACT

AVCILAR CENTRAL FACTORY

Tahtakale Mah. Eski İstanbul Cad.B
No:45/A 34325
Avcılar / İstanbul

Tel: (Factory) : +90 212 648 08 08

SULTANBEYLİ FACTORY

Orhangazi Mah. Orhangazi Cad. No:80
Sultanbeyli / İstanbul

Tel: (Factory) : +90 216 487 36 82

ANKARA FACTORY

Saray Mah. Keresteciler San. Sitesi 5. Cad. No:18
Kahramankazan / Ankara

Tel: (Factory) : +90 312 543 79 42

İKİTELLİ FACTORY

Sefaköy San. Sit. 14. Blok No: 34 - 36
Başakşehir / İstanbul

Tel: (Factory) : +90 212 549 28 73

MANİSA FACTORY

Kayalıoğlu Mah. Akhisar OSB. 5. Cad. 2. Kısım No:15
Akhisar / Manisa

Tel: (Factory) : +90 236 427 24 11

TOKAT FACTORY

Arzupınar Köyü. Turhal OSB. 2. Cad. No:9
Turhal / Tokat

Tel: (Factory) : +90 356 502 01 72